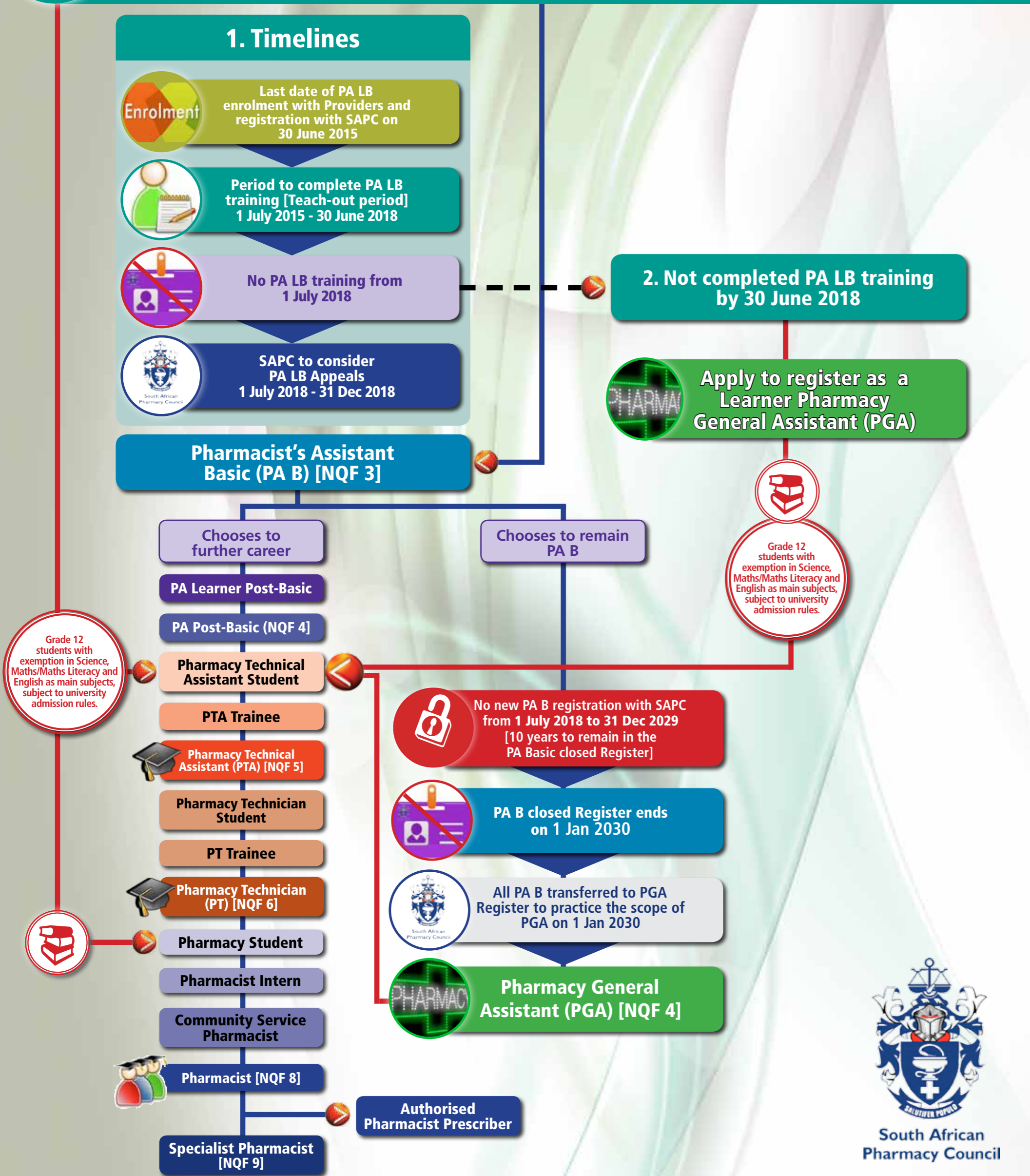


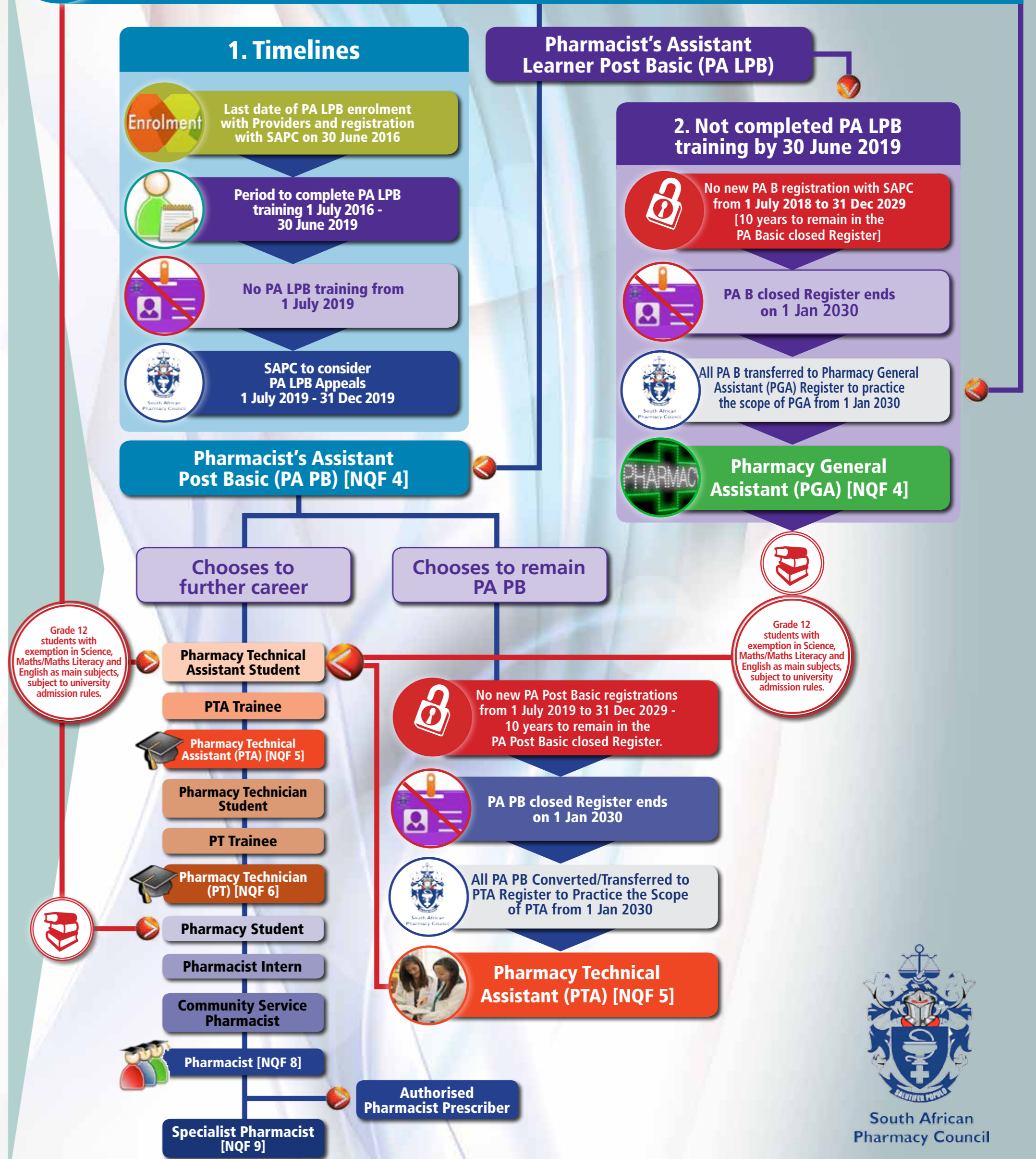
New Pharmacy Midlevel Workers

1 Pharmacist's Assistant Learner Basic (PA LB)



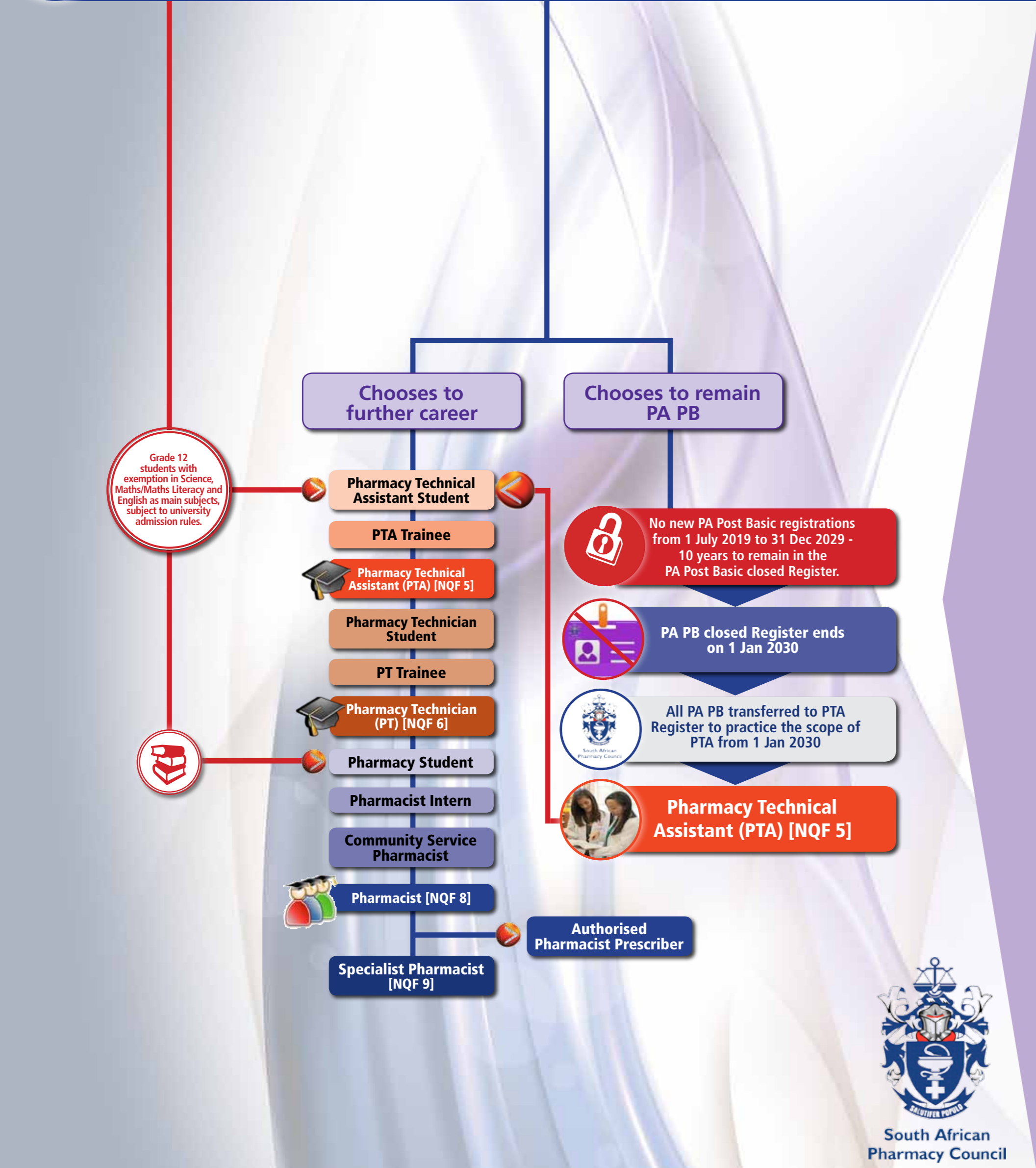
QUALIFICATION	2013	2014	2015	2016	2017	2018	2018
Pharmacist's assistants in the category LEARNER BASIC	PA LB enrolment with Providers and registration with SAPC	PA LB enrolment with Providers and registration with SAPC	Last date of PA LB enrolment with Providers and registration with SAPC, [Teach-out period starts] 30 June	Teach-out period	Teach-out period	End of the teach-out period (close the register) 30 June	Apply to register as a Learner Pharmacy General Assistant (PGA) 30 June

2 Pharmacist's Assistant Basic (PA B) [NQF 3]



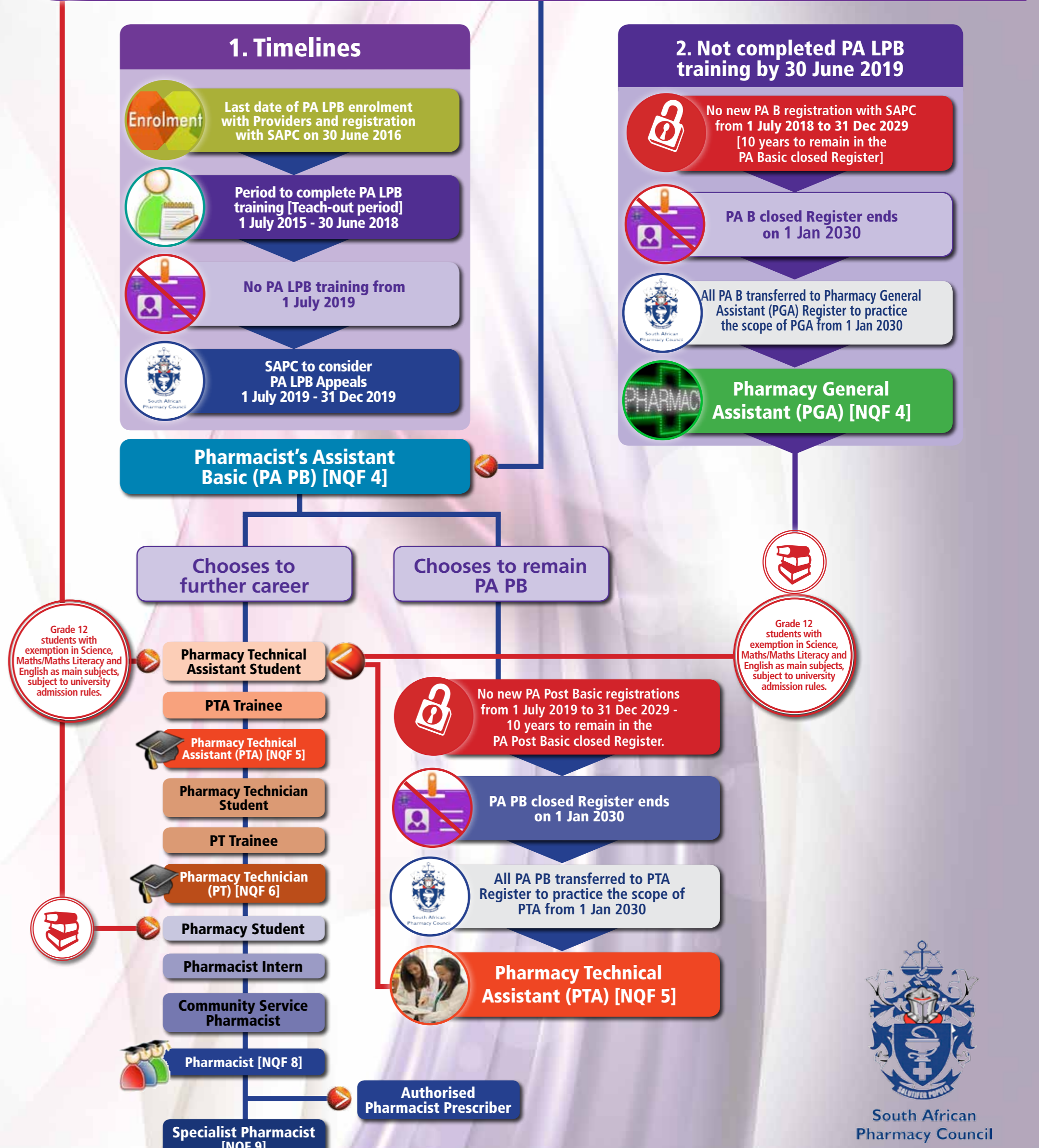
QUALIFICATION	2013	2014	2015	2016	2017	2018	2019-2029	2030
Pharmacist's assistants in the category BASIC							1 Jul 2019 - 31 Dec 2029 Closed Register	1 Jan Transfer to the register of pharmacy general assistants and practice such scope of practice

4 Pharmacist's Assistant Post Basic (PA PB) [NQF 4]



QUALIFICATION	2013	2014	2015	2016	2017	2018	2019	2019-2029	2030
Pharmacist's assistants in the category POST BASIC							End of the teach-out period (close the register)	1 Jul 2019 - 31 Dec 2029 Closed Register	1 Jan Transfer to the register of pharmacy technical assistants and practice such scope of practice

3 Pharmacist's Assistant Learner Post Basic (PA LPB)



QUALIFICATION	2013	2014	2015	2016	2017	2018	2019	2019-2029	2030
Pharmacist's assistants in the category LEARNER POST BASIC	PA LPB enrolment with Providers and registration with SAPC	PA LPB enrolment with Providers and registration with SAPC	PA LPB enrolment with Providers and registration with SAPC	Last date of PA LPB enrolment with Providers and registration with SAPC, [Teach-out period starts] 30 June	Teach-out period	Teach-out period	End of the teach-out period (close the register) 30 June	1 Jul 2018 - 31 Dec 2029 Closed Register as PA B	1 Jan Transfer to the register of pharmacy general assistants and practice such scope of practice. The registers of both categories of pharmacist's assistants and scope of practice ceases to exist