

SAFMA - Annual Conference - Smart Lighting

May 2017





Introduction

Aurora Group Overview

WORLD CLASS

Manufacturing and
Sourcing Capabilities

12,000 Products Launched

900+ Employees

20% UK Market Share*

95% LED Sales

13 International Facilities



450,000 sq.ft
IN-HOUSE
UK & Asia

R&D
Electronic Engineering
Mechanical Engineering
Industrial Design
NEMKO Test Facilities

RESIDENTIAL 

RETAIL 

HOSPITALITY 

COMMERCIAL 

INDUSTRIAL 





Smart Enterprise



ENTERPRISE IoT LIGHTING ECOSYSTEM

LIGHTING ANALYTICS · BUILDING INTELLIGENCE · SPACE OPTIMIZATION



An aerial night view of a city skyline, likely New York City, with numerous skyscrapers and city lights. The image is overlaid with a semi-transparent blue filter. The text is centered in the upper half of the image.

“

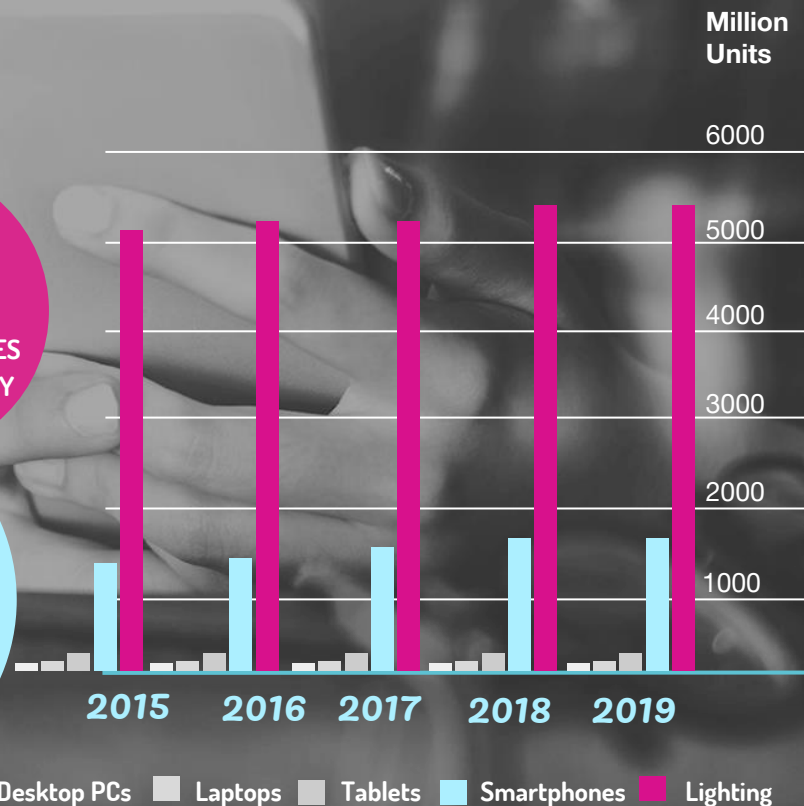
**Every building already has a lighting
infrastructure capable of becoming
a sensory network.**

"Lighting is the 'Trojan Horse' of the Internet of Things as the most pervasive & ubiquitous element in any building"



OVER
5 TIMES
MORE LIGHTS
THAN SMARTPHONES
SHIPPED ANNUALLY

OVER
10 TIMES
MORE LIGHTS
THAN PCs, LAPTOPS &
TABLETS COMBINED!



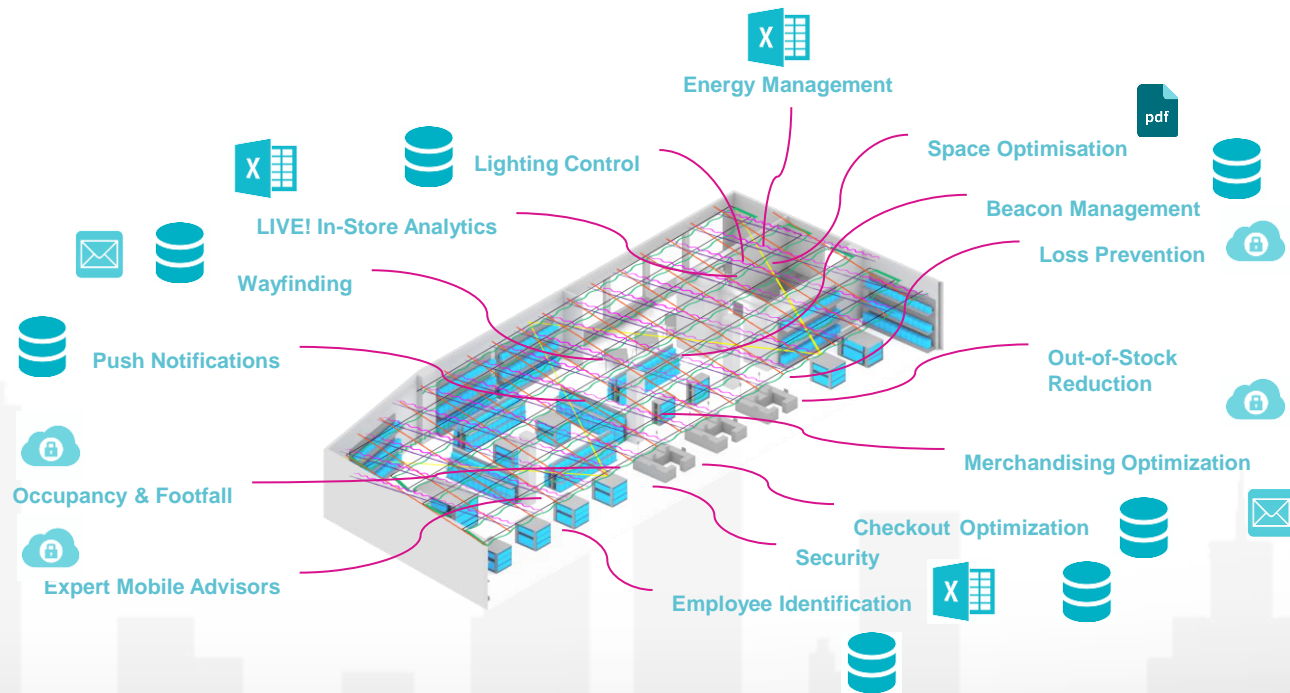
Desktop PCs Laptops Tablets Smartphones Lighting

PROBLEM 1

Multiple, disparate networks with siloed datasets make them costly to maintain, integrate, manage & upgrade

PROBLEM 2

Deploying a single, pervasive, cost effective infrastructure of sensing and hardware streaming data to a single accessible data source, delivering actionable insights

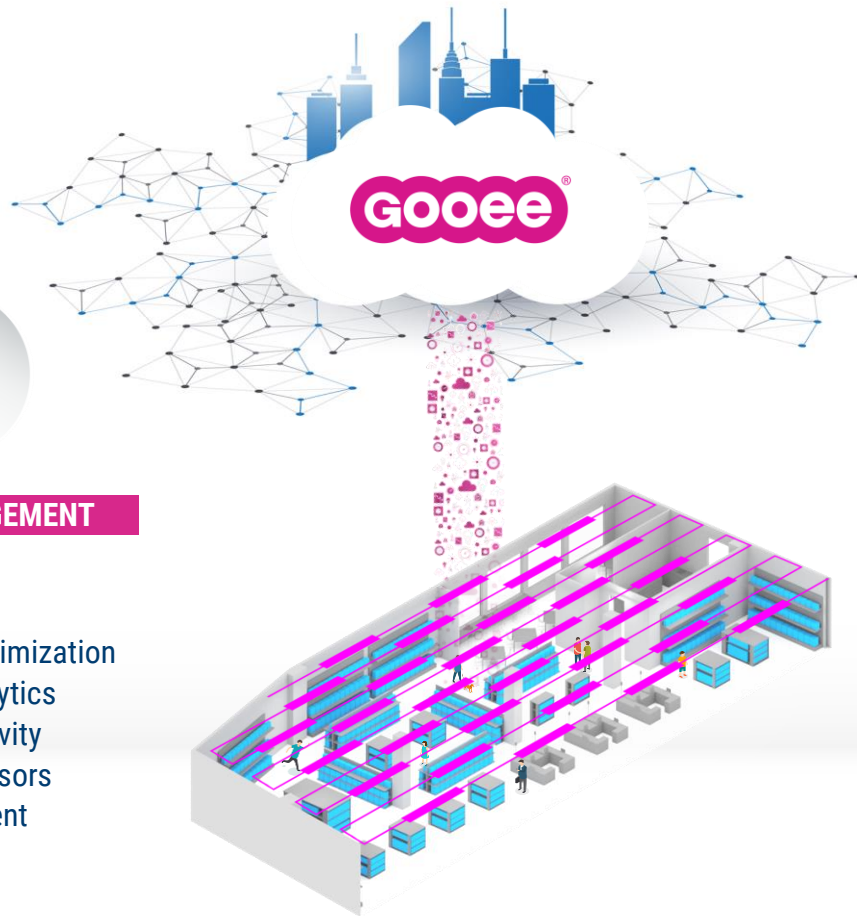


LIGHTING IS 'THE SINGLE ESSENTIAL NETWORK'



HUMAN ENGAGEMENT

- Wayfinding
- Push Notifications
- Merchandising Optimization
- LIVE! In-Store Analytics
- Employee Productivity
- Expert Mobile Advisors
- Beacon Management
- Connected Ads



BUILDING INTELLIGENCE

- Lighting Control
- Energy Management
- Occupancy & Footfall
- Space Optimisation
- Predictive Maintenance



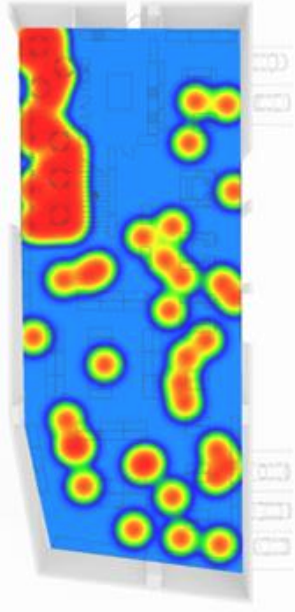
ASSET TRACKING

- Out-of-Stock Reduction
- Connected Supply Chain
- Checkout Optimization
- Loss Prevention
- Security

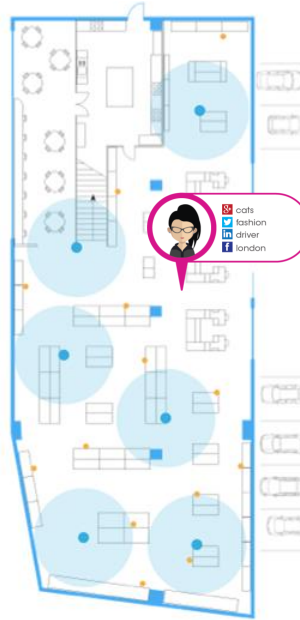
Physical
Environment



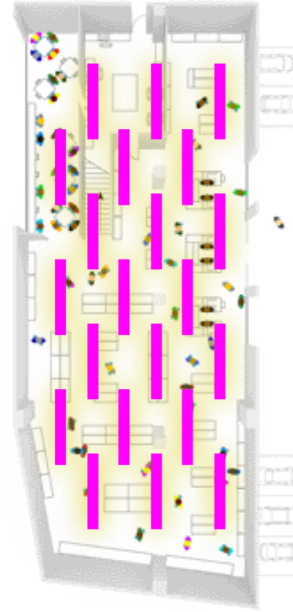
Occupancy
Heatmapping



Beacon
Management



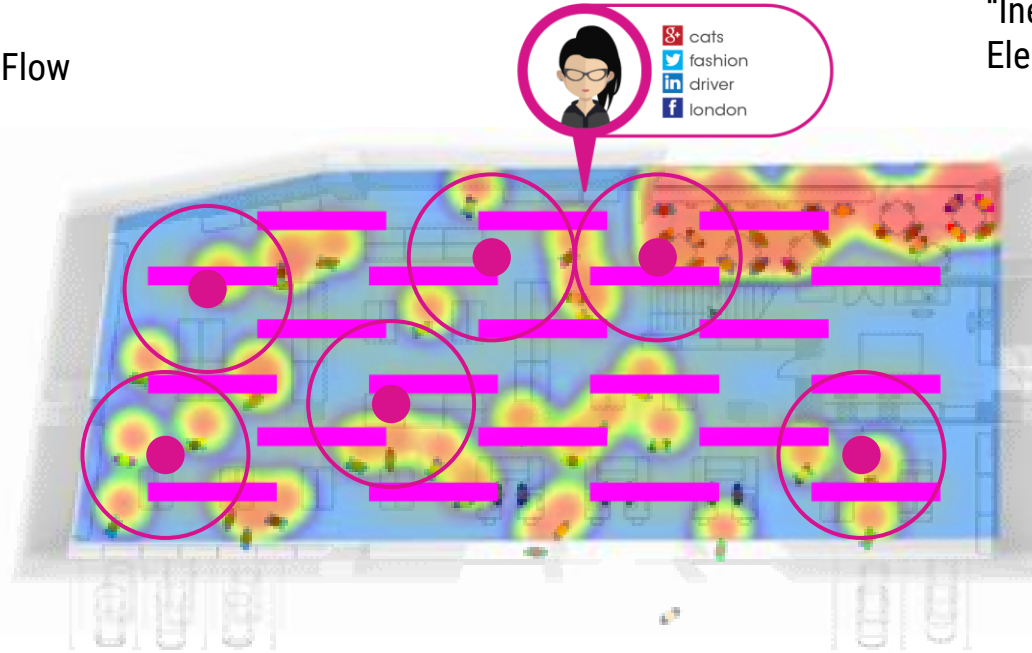
Light, Control &
Sensing Plan



"Ineffective Path Flow
Re-Merchandise"

"Under utilised space let's
rent it out"

"We need more
checkout staff between 3-
6pm, Wednesdays"



"Ineffective POS in
Electronics Dept."

"Planned
maintenance
based on
predicted EOL"

"Re-Price Brand X's
POS due to increased
footfall"

World's Smallest
IoT Lighting Sensor

Measure
Ambient Light
Levels

Measure Color
Temperature

Occupancy
Detection

Motion, Volume &
Direction Tracking

SENSE · CONTROL · COMMUNICATE



Goeee has designed and engineered all aspects of the platform from the ground up, and owns all technologies across the stack.

Smart Environments · Wireless Lighting Control · Daylight Harvesting · Granular Energy Monitoring · Predictive Maintenance · Presence

Detection



Integrated
Sensing



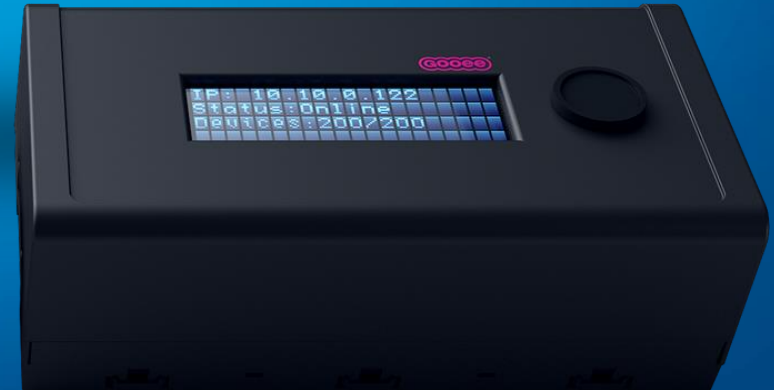
Wireless Control



Power Control



Retrofit
Sensing Clip



Enterprise Scale Gateway

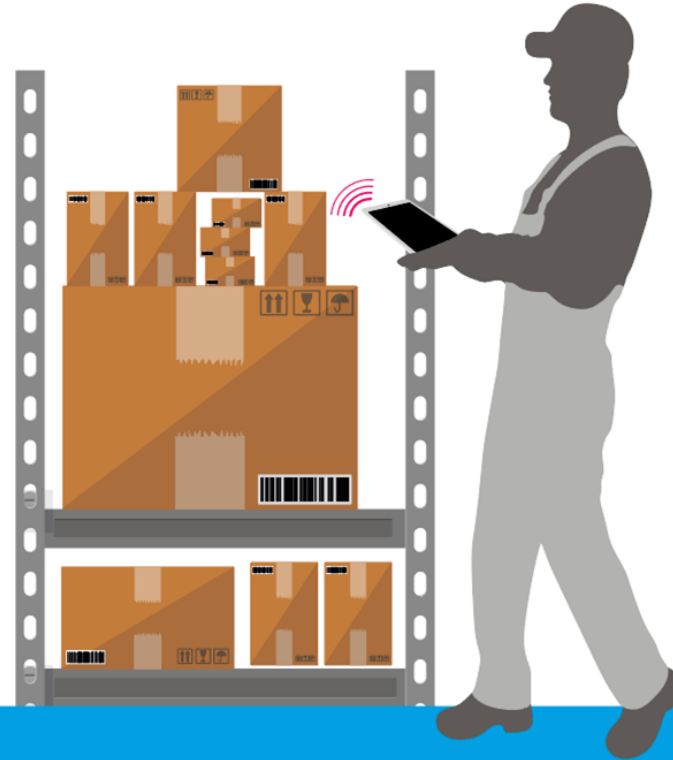
Energy Management

Predictive Maintenance

Asset Tracking

Wireless Control

Occupancy



Increase Productivity

Space Optimisation

Comfort Analytics

Personalised Control

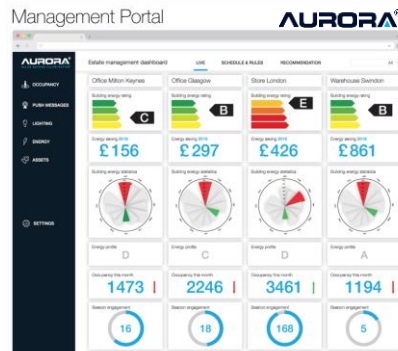
Individual Addressability

Gooee® inside



Enterprise Value

Multi-Site Management
Estate Optimisation
Asset Management
Maintenance Scheduling



GOOEE® inside

Estate Management



Management Portal



Office



Management Portal



Any Questions?

